

MY 2005 SL-CLASS MODEL RANGE



Mercedes-Benz

SL 500	Released July 2004	\$91,300 ¹
SL 600	Released July 2004	\$129,400 ¹
SL 55 AMG	Released July 2004	\$123,300 ¹
SL 65 AMG	Released July 2004	\$182,100 ¹

¹ = Does not include destination and delivery



Positioning

Class

- The SL is the ultimate sports GT in the world

Model

SL500

- Based on the legendary MB Roadster heritage, the SL-Class forms a unique combination of:
 - Futuristic, thrilling styling elements
 - Exhilarating driving dynamics
 - Advanced technology
 - Innovative amenities

SL600

- Most exclusive, luxurious vehicle within SL-Class
- Focus on luxury, sophistication and refinement

SL55 AMG

- First AMG SL in the US
- Competes with true exotic sports cars

SL65 AMG

- Limited production vehicle
- Most powerful production Mercedes-Benz ever offered
- Highest performance SL appeals to discriminating enthusiast owners of multiple Mercedes-Benz vehicles

Together, these core competencies create a new Sports GT sensation: the SL-Class

MY 2005 SL-CLASS



Mercedes-Benz

Optional Equipment Availability

Code	Optional Equipment	SL500	SL600	SL55 AMG	SL65 AMG
022	Sirius Satellite Radio - Includes 14-month subscription. VPC installed.	\$699	\$699	\$699	\$699
051	Hands-free Communication System with Voice Control (Handset and cradle sold separately)	\$1450	S	\$1450	S
219	DISTRONIC	\$3070	\$3070	\$3070	\$3070
220	Parktronic	\$1080	\$1080	\$1080	\$1080
401	Active Ventilated Seats	N/A	N/A	\$1240	S
415	Panorama Roof	\$1880	\$1880	\$1880	\$1880
443	Heated Steering Wheel ¹	\$430	\$430	N/A	N/A
475	Tire-Pressure Monitoring System	\$660	\$660	\$660	\$660
614	Bi-Xenon	\$770	S	\$770	S
664	17" 7-Spoke Alloy Wheel ²	O	N/A	N/A	N/A
889	Keyless Go	\$1060	\$1060	\$1060	\$1060

O = Optional Equipment
 S = Standard offering
 N/A = Not available

¹ = Can not be ordered in conjunction with AMG Sports Package
² = No cost/credit SL500 option



Option Package Availability

Code	Optional Equipment	SL500	SL600	SL55 AMG	SL65 AMG
317	COMFORT PACKAGE Active Ventilated Front Seats, Dynamic Multicontour Seatbacks	\$1590	S	N/A	N/A
318	TRIM PACKAGE Wood and leather steering wheel and shift knob	\$880	S	N/A	N/A
321	AMG SPORT PACKAGE ¹ Body-colored AMG-designed sculpted front air dam, side skirts, rear apron, and steering wheel shift buttons Wheels and high performance tires: - SL500 and SL600: 5-hole turbine style directional alloy wheels - SL55 AMG: AMG 18" 5-spoke mono-wheels or AMG 18" multi-spoke wheels - SL65 AMG: AMG 19" twin-spoke multi-piece wheels	\$5310	\$5310	S	S

O = Optional Equipment
S = Standard offering
N/A = Not available

¹ = Can not be ordered in conjunction with heated steering wheel



Standard and Special Order Paint and Upholstery Matrix

Special order items are highlighted in green

Interior >	SL500	Black Nappa ⁽¹⁾ (X11) <small>(Upholstery code 201 + Option code X11)</small>	Charcoal [†] (201)	Stone [†] (205)	Berry Red / Charcoal ^{†(2)} (207)	Ash [†] (208)
Trim >		Walnut (731)	Walnut (731)	Chestnut (733)	Black Ash (736)	Walnut (731)
Exterior ▼						
Black (040)		X	X	X	X	X
Black Opal* (189)		X	X	X	X	X
Obsidian Black* (197)		X	X	X	X	X
Orion Blue* (345)		\$1,150	\$1,150	\$1,150	N/A	\$1,150
Capri Blue* (359)		\$1,150	\$1,150	\$1,150	N/A	\$1,150
Firemist Red* (548)		X	X	X	N/A	X
Mars Red (590)		X	X	X	X	X
Desert Silver* (693)		X	X	X	N/A	N/A
Pewter* (723)		X	X	X	X	X
Brilliant Silver* (744)		X	X	X	X	X
Diamond Silver* (762)		X	X	X	X	X
Everest Green* (816)		\$1,150	\$1,150	\$1,150	N/A	\$1,150
Aegean Blue (946)		X	X	X	N/A	X
Alabaster White (960)		X	X	X	X	X

X = Standard Offering

N/A = Not Available

* = Metallic Paint

Shaded Box = Special Order, \$1,150 extra charge

[†] = Seats are monotone with the upper door panel and upper dashboard in a darker contrast color

⁽¹⁾ = Exclusive Nappa leather, additional \$3,750 charge

⁽²⁾ = Seats, lower door panel and lower dashboard are Berry Red with the upper dashboard and upper door panel in Charcoal



Standard Order Paint and Upholstery Matrix

Interior > SL 600	Black ⁽¹⁾ (X11) <small>(Upholstery code 501 + Option code X11)</small>	Charcoal [†] (501)	Stone [†] (505)	Berry Red / Charcoal ^{†(2)} (507)	Ash [†] (508)
Trim >	Walnut (731)	Walnut (731)	Chestnut (733)	Black Ash (736)	Walnut (731)
Exterior ▼					
Black (040)	X	X	X	X	X
Black Opal* (189)	X	X	X	X	X
Obsidian Black* (197)	X	X	X	X	X
Orion Blue* (345)	X	X	X	N/A	X
Capri Blue* (359)	X	X	X	N/A	X
Firemist Red* (548)	X	X	X	N/A	X
Mars Red (590)	X	X	X	X	X
Desert Silver* (693)	X	X	X	N/A	N/A
Pewter* (723)	X	X	X	X	X
Brilliant Silver* (744)	X	X	X	X	X
Diamond Silver* (762)	X	X	X	X	X
Everest Green* (816)	X	X	X	N/A	X
Aegean Blue (946)	X	X	X	N/A	X
Alabaster White (960)	X	X	X	X	X

X = Standard Offering
N/A = Not Available
* = Metallic Paint

[†] = Seats are monotone with the upper door panel and upper dashboard in a darker contrast color

⁽¹⁾ = Black Leather, additional \$3,750 charge

⁽²⁾ = Seats, lower door panel and lower dashboard are Berry Red with the upper dashboard and upper door panel in Charcoal



Standard Order Paint and Upholstery Matrix

Interior ▶ SL55 AMG	Black ⁽¹⁾ (X11) <small>(Upholstery code 281 + Option code X11)</small>	Charcoal/ Charcoal [†] (281)	Berry Red / Charcoal ^{†(2)} (287)	Ash/ Dark Ash [†] (288)
Exterior ▼				
Black (040)	X	X	X	X
Black Opal* (189)	X	X	X	X
Obsidian Black* (197)	X	X	X	X
Orion Blue* (345)	X	X	N/A	X
Capri Blue* (359)	X	X	N/A	X
Firemist Red* (548)	X	X	N/A	X
Mars Red (590)	X	X	X	X
Desert Silver* (693)	X	X	N/A	N/A
Pewter* (723)	X	X	X	X
Brilliant Silver* (744)	X	X	X	X
Diamond Silver* (762)	X	X	X	X
Everest Green* (816)	X	X	N/A	X
Aegean Blue (946)	X	X	N/A	X
Alabaster White (960)	X	X	X	X
Standard Trim (all interiors): <i>Aluminum</i>				
Optional Trim (no cost): Chestnut Wood (733) (Not available with Berry Red/Charcoal (287) interior)				
Walnut (731) (Not available with Berry Red/Charcoal (287) interior)				
Black Ash (736)				

X = Standard Offering
N/A = Not Available
* = Metallic Paint

[†] = Seats are monotone with the upper door panel and upper dashboard in a darker contrast color

⁽¹⁾ = Black Leather, additional \$3,750 charge

⁽²⁾ = Seats, lower door panel and lower dashboard are Berry Red with the upper dashboard and upper door panel in Charcoal



Standard Order Paint and Upholstery Matrix

Interior ▶ SL65 AMG	Black ⁽¹⁾ (X11) <small>(Upholstery code 581 + Option code X11)</small>	Charcoal/ Charcoal [†] (581)	Berry Red / Charcoal ^{†(2)} (587)	Ash/ Dark Ash [†] (588)
Exterior ▼				
Black (040)	X	X	X	X
Black Opal* (189)	X	X	X	X
Obsidian Black* (197)	X	X	X	X
Orion Blue* (345)	X	X	N/A	X
Capri Blue* (359)	X	X	N/A	X
Firemist Red* (548)	X	X	N/A	X
Mars Red (590)	X	X	X	X
Desert Silver* (693)	X	X	N/A	N/A
Pewter* (723)	X	X	X	X
Brilliant Silver* (744)	X	X	X	X
Diamond Silver* (762)	X	X	X	X
Everest Green* (816)	X	X	N/A	X
Aegean Blue (946)	X	X	N/A	X
Alabaster White (960)	X	X	X	X
<p>Standard Trim: <i>Burl Walnut Wood (731) (Not available with Berry Red/Charcoal (587) interior)</i></p> <p>Optional Trim (no cost): Chestnut Wood (733) (Not available with Berry Red/Charcoal (587) interior) Black Ash (736)</p>				

X = Standard Offering
 N/A = Not Available
 * = Metallic Paint

[†] = Seats are monotone with the upper door panel and upper dashboard in a darker contrast color
⁽¹⁾ = Black Leather, additional \$3,750 charge
⁽²⁾ = Seats, lower door panel and lower dashboard are Berry Red with the upper dashboard and upper door panel in Charcoal

MY 2005 SL-CLASS



Mercedes-Benz

Specifications

Models >	SL 500 Coupe/Roadster	SL 600 Coupe/Roadster	SL 55 AMG Coupe/Roadster	SL65 AMG Coupe/Roadster
Displacement	4,966-cc	5,513-cc	5,439-cc	5,980-cc
Engine	5.0 liter V-8	5.5 liter Bi-turbo V12	AMG 5.5 liter intercooled supercharged V8	AMG 6.0 liter twin-turbo V-12
Horsepower	302 hp @ 5,600 rpm	493 hp @ 5,000 rpm	493 hp @ 6,100 rpm	604 hp @ 5,500 rpm
Torque (lb-ft)	339 lb-ft @ 2,700 - 4,250 rpm	590 lb-ft @ 1,800 - 3,500 rpm	516 lb-ft @ 2,750 - 4,000 rpm	738 lb-ft @ 3,000 rpm
Acceleration 0-60 mph	6.1 seconds	4.5 seconds	4.5 seconds	4.2 seconds



Product Highlights - Exterior



AMG 19" twin-spoke multi-piece alloy wheels



SL65 AMG badging

Rear fascia with black mesh grill

V-12 AMG sport exhaust with chrome dual exhaust pipes



Product Highlights - Exterior



Formula 1 inspired front air dam with black mesh grill, special intake and heat extractors

"V-12 BiTurbo" badging

AMG 19" front wheel with 15.4" Ventilated Compound Disc and AMG 8-piston fixed caliper

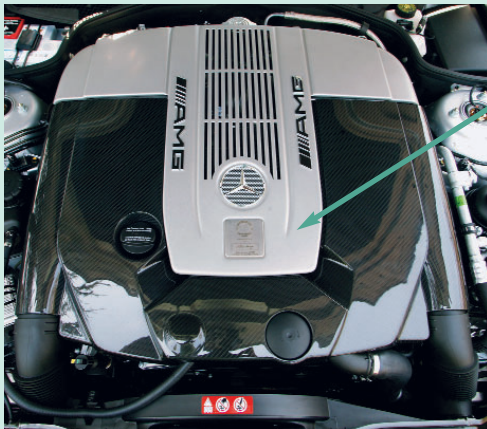




Product Highlights - Exterior/Interior

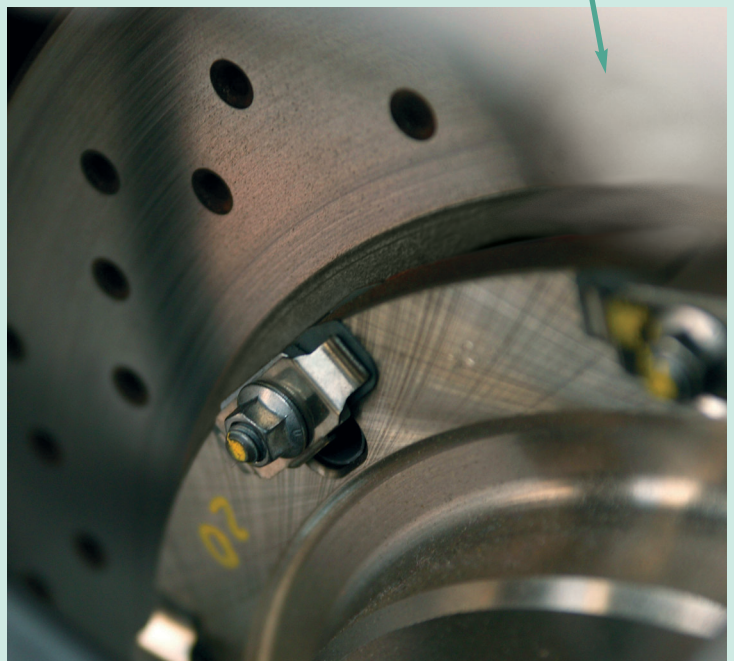
AMG sport steering wheel with gearshift buttons

New Black leather interior (Code X11 \$3,750 additional charge) and Black Ash wood trim (Code 736) shown



AMG 6.0 liter V-12 BiTurbo engine

AMG compound braking system with two-piece rotor and hub assembly



AMG Instrument Cluster with 220 mph speedometer and V-12 BiTurbo badging



Product Highlights - Technical

Engine, Drivetrain & Performance

- AMG 6.0 liter twin-turbo V-12
- 604 hp @ 5,500 rpm
- 738 lb-ft @ 3,000 rpm
- 0-60 mph acceleration in 4.2 seconds
- Electronically-limited top speed of 155 mph
- AMG locking limited slip differential
- AMG SpeedShift transmission with steering-wheel-mounted controls for manual gear selection

Chassis

- AMG modified ABC Active Suspension System (with Sport Mode)

AMG High-Performance Braking System

- AMG compound braking system with two-piece rotor and hub assembly for 25% reduced weight/increased cooling
- Front: cross-drilled, internally ventilated 15.4" brake discs with silver AMG 8-piston calipers
- Rear: cross-drilled, internally ventilated 13.7" brake discs with silver AMG 4-piston calipers
- AMG modified performance SBC and ESP settings

Wheels

- AMG 19" twin-spoke multi-piece alloy wheels
- 255/35 (front) 285/30 (rear) ZR high-performance tires

AMG Sport Exhaust System

- AMG Dual exhaust system with sport mufflers
- Enlarged pipe diameters
- Four AMG chrome exhaust tips



Modifications vs. MY 2004

New Model

- SL65 AMG
- AMG 6.0 liter twin-turbo V-12
- 604 Horsepower @ 5,500 rpm
- 738 lb-ft torque @ 3,000 rpm

Paint and Upholstery

- Deleted Teal Blue Upholstery (Code 207/507) for SL500/SL600
- Added Stone (205/505) as upholstery option for Orion Blue (Code 345)
- Added Black Nappa Leather upholstery for all SL models (Code X11: \$3,750 additional charge)

Optional Equipment

- Steering wheel shift buttons included as standard on AMG Sport Package*

New Standard Equipment

- New COMAND APS headunit featuring DVD Navigation
- New center console design due to COMAND APS head unit
- New gear shift lever design
- Anti-whiplash measures for headrests
- Bose® Audio: Upgraded to AudioPilot Digital Sound with Surround Sound

* *Can not be ordered in conjunction with heated steering wheel*